

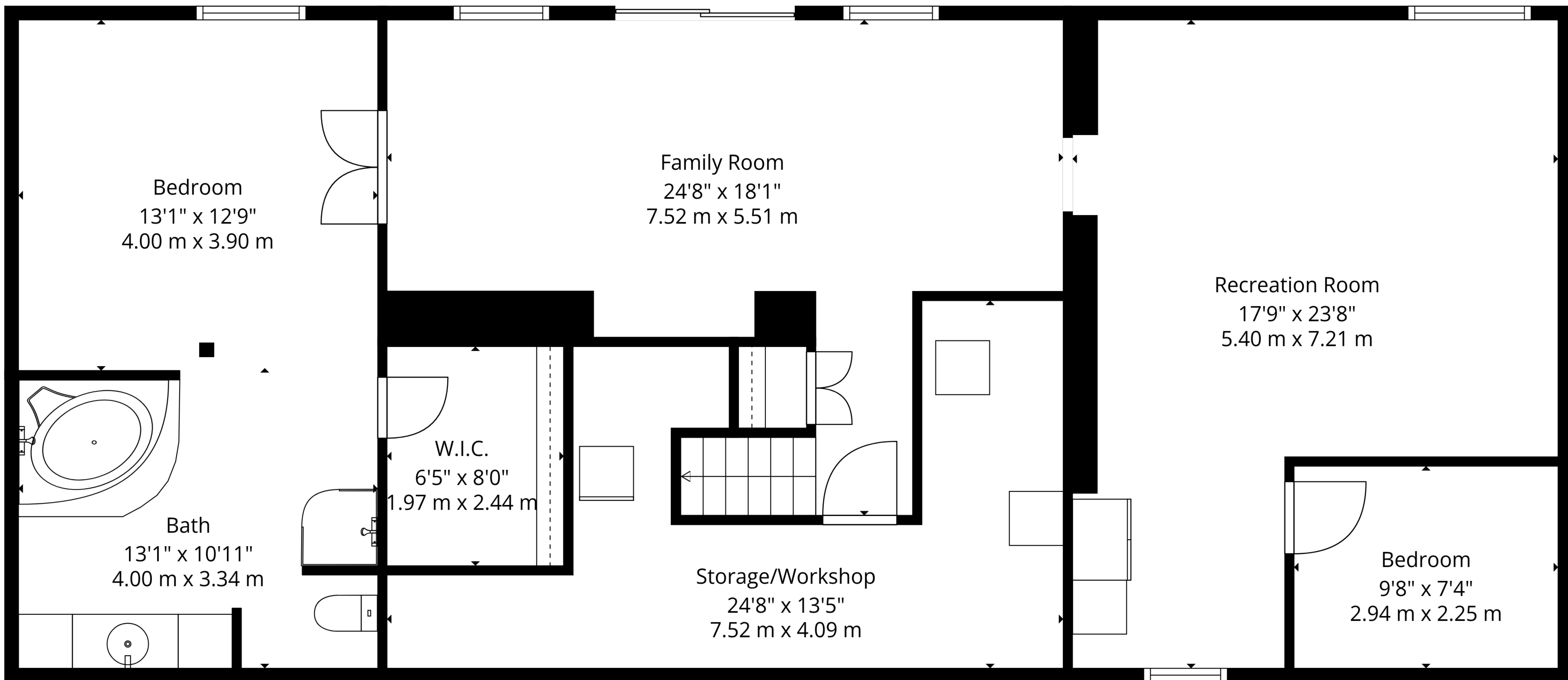
Dry Boathouse / Plane Hangar  
35'4" x 25'7"  
10.76 m x 7.79 m

**Total GLA: 3342 sq. ft, 310 m2 | Total: 5213 sq. ft, 485 m2**

Floor 1 - Below grade: (Excluded areas 964 sq. ft, 90 m2)  
1st floor: 1209 sq. ft, 112 m2 (Excluded areas 201 sq. ft, 19 m2)  
2nd floor: 1682 sq. ft, 156 m2 (Excluded areas 116 sq. ft, 11 m2)  
3rd floor: 0 sq. ft, 0 m2 (Excluded areas 590 sq. ft, 55 m2)  
4th floor: 451 sq. ft, 42 m2







**Total GLA: 3342 sq. ft, 310 m2 | Total: 5213 sq. ft, 485 m2**

Floor 1 - Below grade: (Excluded areas 964 sq. ft, 90 m2)

1st floor: 1209 sq. ft, 112 m2 (Excluded areas 201 sq. ft, 19 m2)

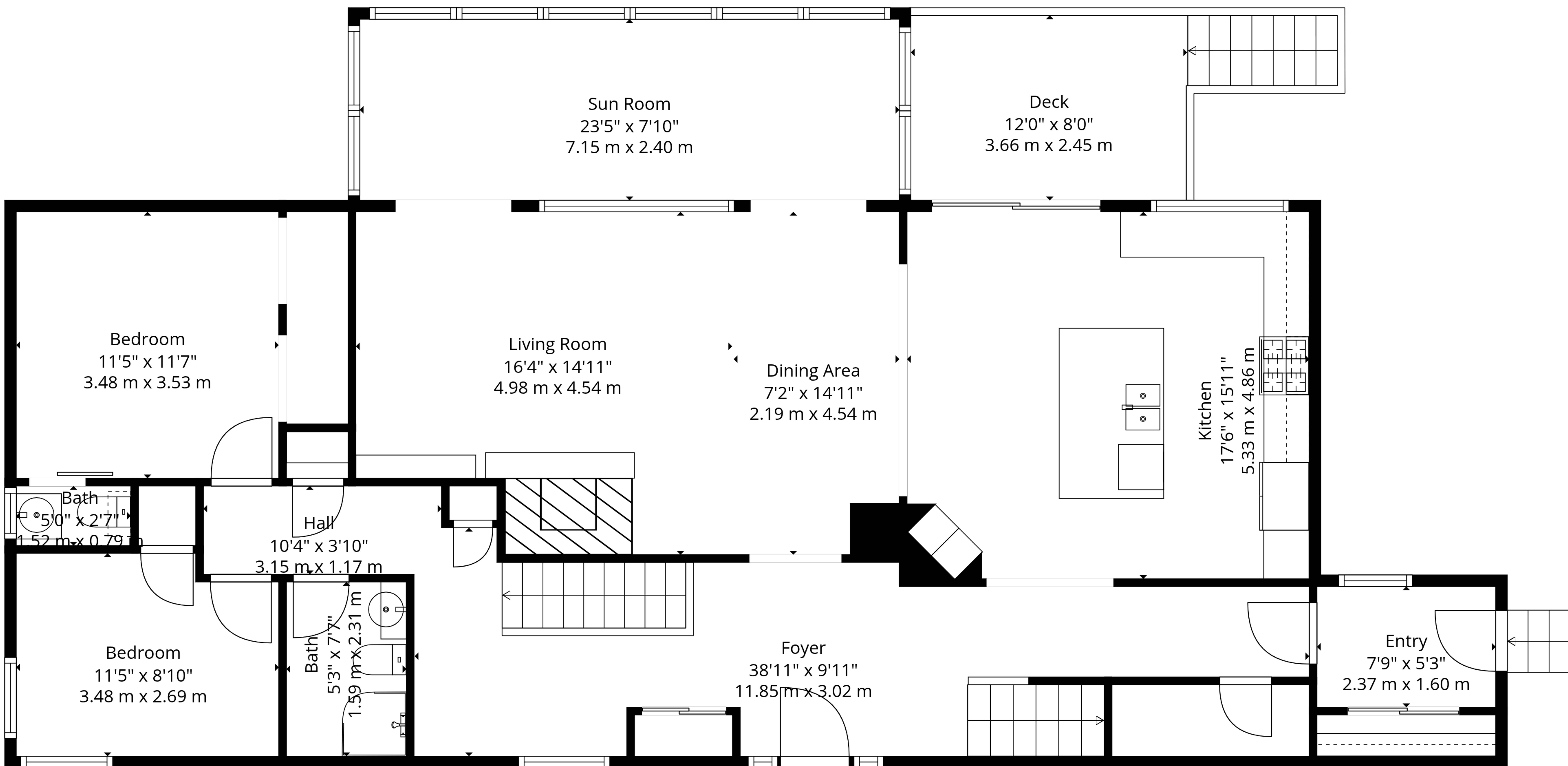
2nd floor: 1682 sq. ft, 156 m2 (Excluded areas 116 sq. ft, 11 m2)

3rd floor: 0 sq. ft, 0 m2 (Excluded areas 590 sq. ft, 55 m2)

4th floor: 451 sq. ft, 42 m2





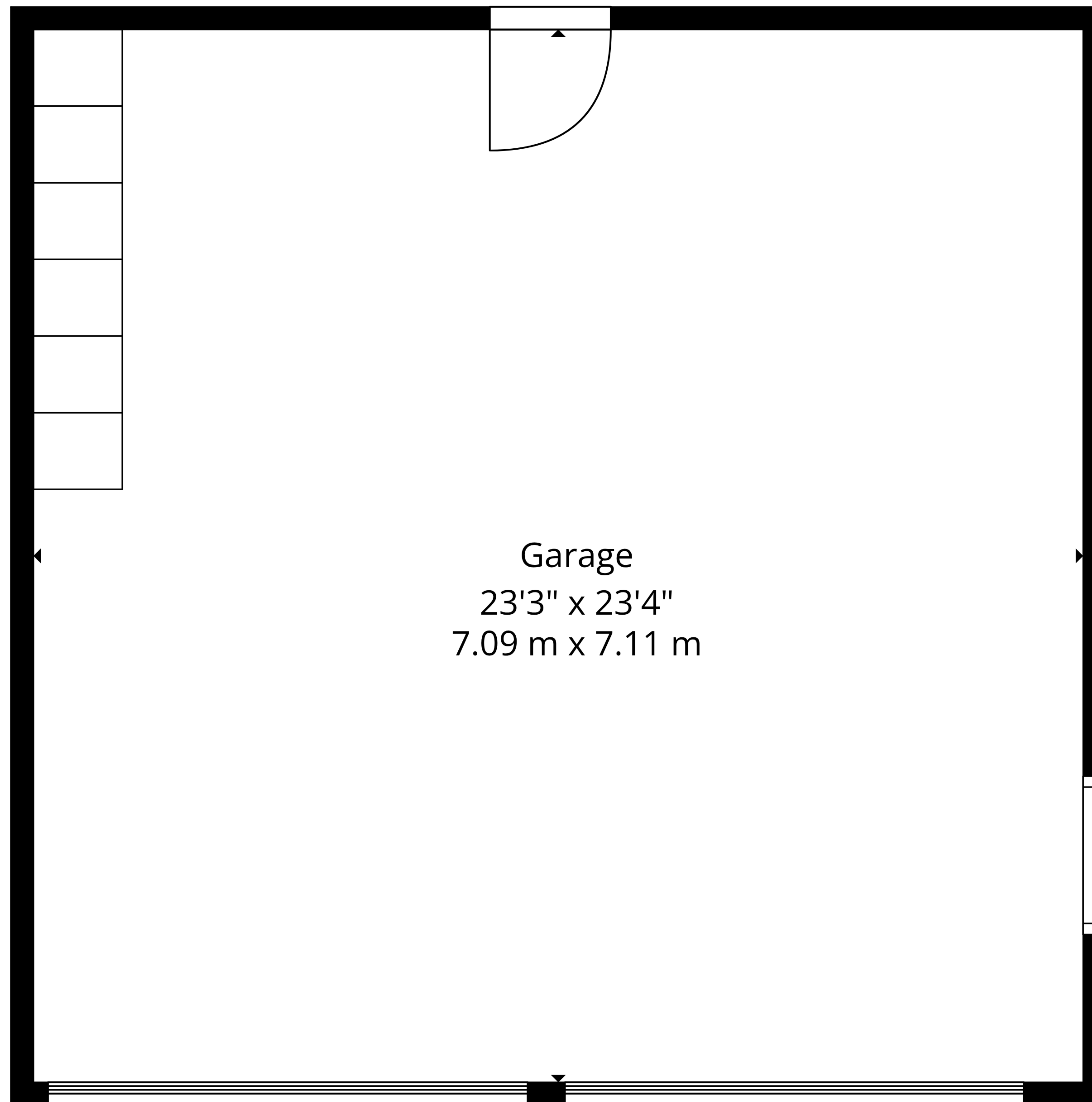


**Total GLA: 3342 sq. ft, 310 m2 | Total: 5213 sq. ft, 485 m2**

Floor 1 - Below grade: (Excluded areas 964 sq. ft, 90 m2)  
 1st floor: 1209 sq. ft, 112 m2 (Excluded areas 201 sq. ft, 19 m2)  
 2nd floor: 1682 sq. ft, 156 m2 (Excluded areas 116 sq. ft, 11 m2)  
 3rd floor: 0 sq. ft, 0 m2 (Excluded areas 590 sq. ft, 55 m2)  
 4th floor: 451 sq. ft, 42 m2







**Total GLA: 3342 sq. ft, 310 m2 | Total: 5213 sq. ft, 485 m2**

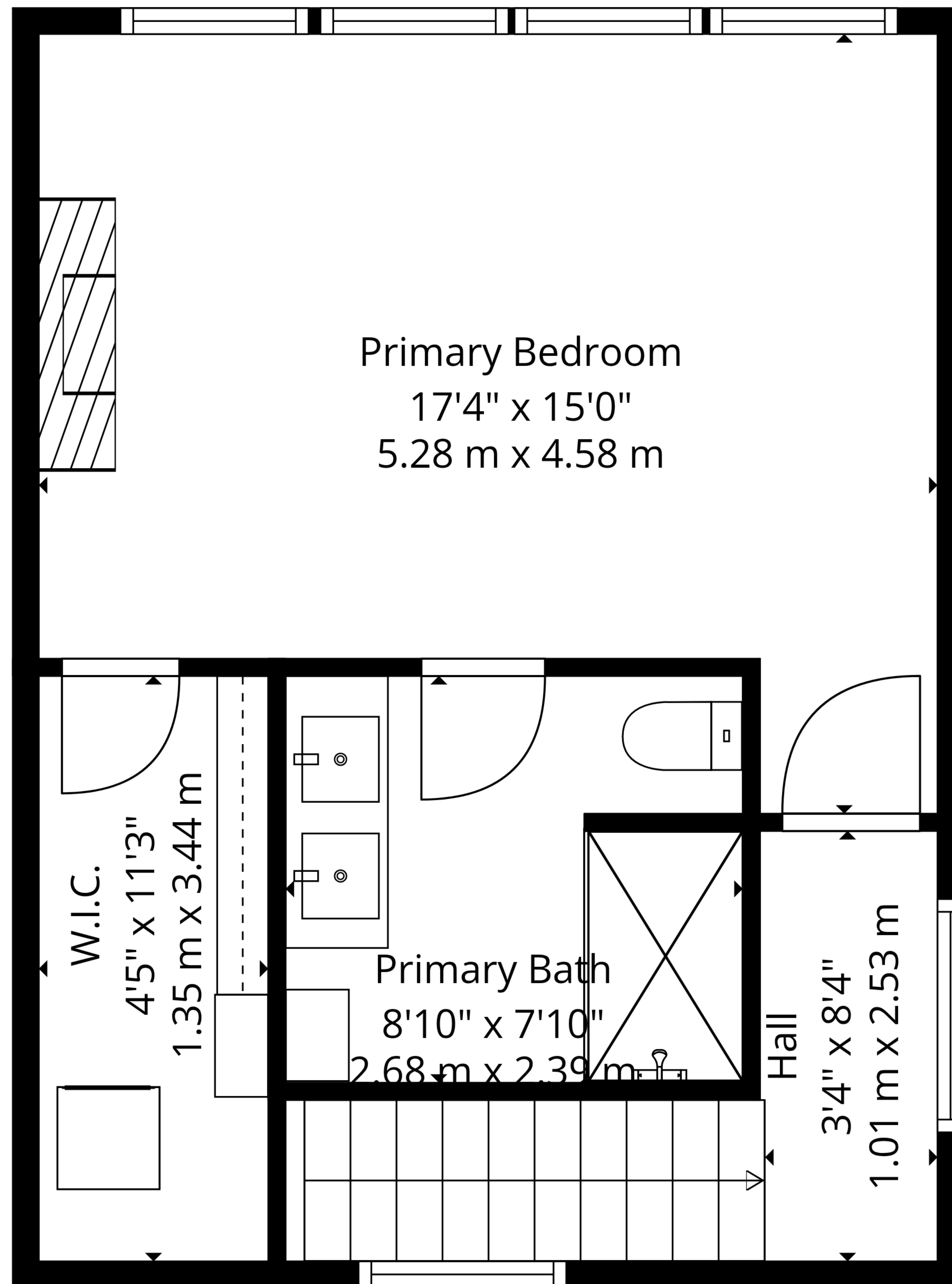
Floor 1 - Below grade: (Excluded areas 964 sq. ft, 90 m2)

1st floor: 1209 sq. ft, 112 m2 (Excluded areas 201 sq. ft, 19 m2)

2nd floor: 1682 sq. ft, 156 m2 (Excluded areas 116 sq. ft, 11 m2)

3rd floor: 0 sq. ft, 0 m2 (Excluded areas 590 sq. ft, 55 m2)

4th floor: 451 sq. ft, 42 m2



**Total GLA: 3342 sq. ft, 310 m2 | Total: 5213 sq. ft, 485 m2**

Floor 1 - Below grade: (Excluded areas 964 sq. ft, 90 m2)

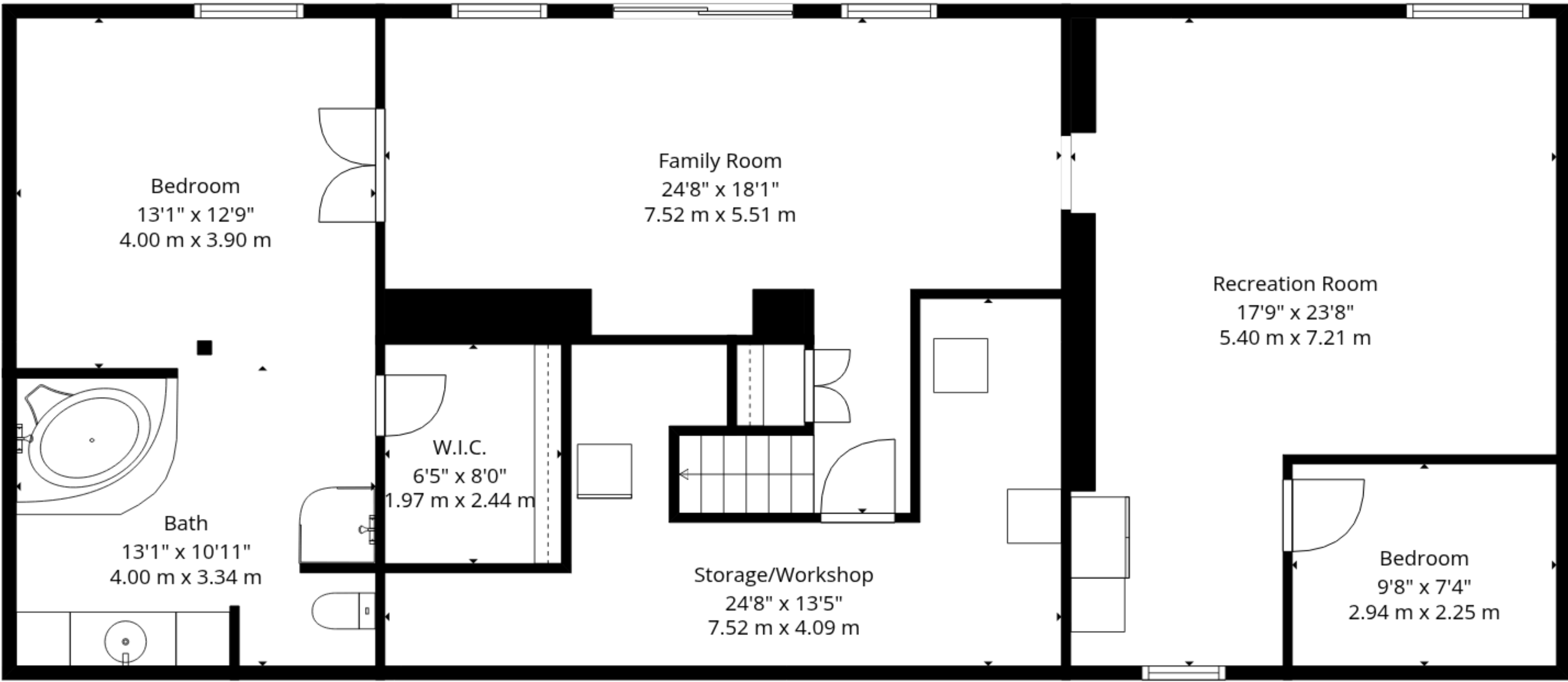
1st floor: 1209 sq. ft, 112 m2 (Excluded areas 201 sq. ft, 19 m2)

2nd floor: 1682 sq. ft, 156 m2 (Excluded areas 116 sq. ft, 11 m2)

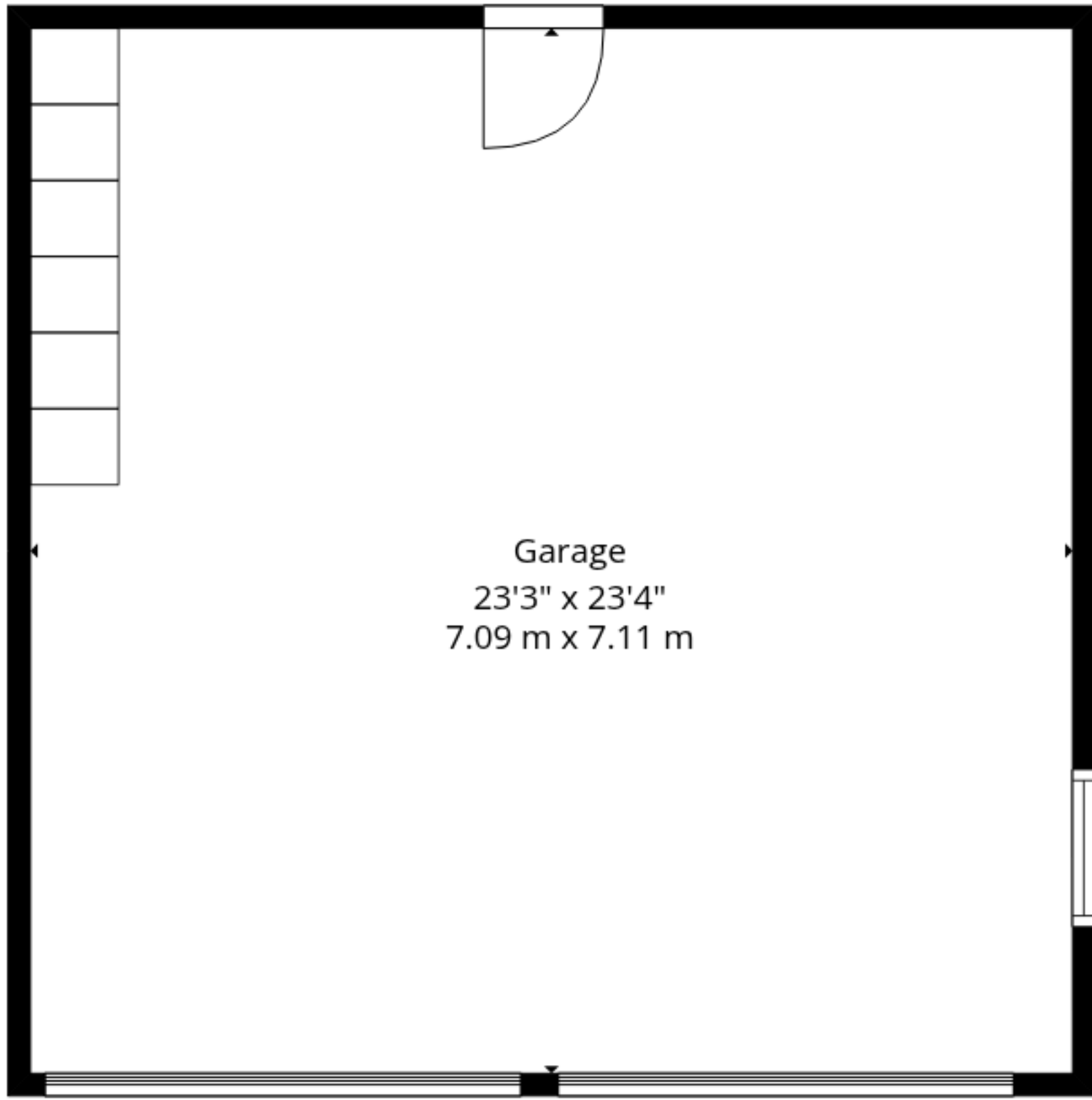
3rd floor: 0 sq. ft, 0 m2 (Excluded areas 590 sq. ft, 55 m2)

4th floor: 451 sq. ft, 42 m2

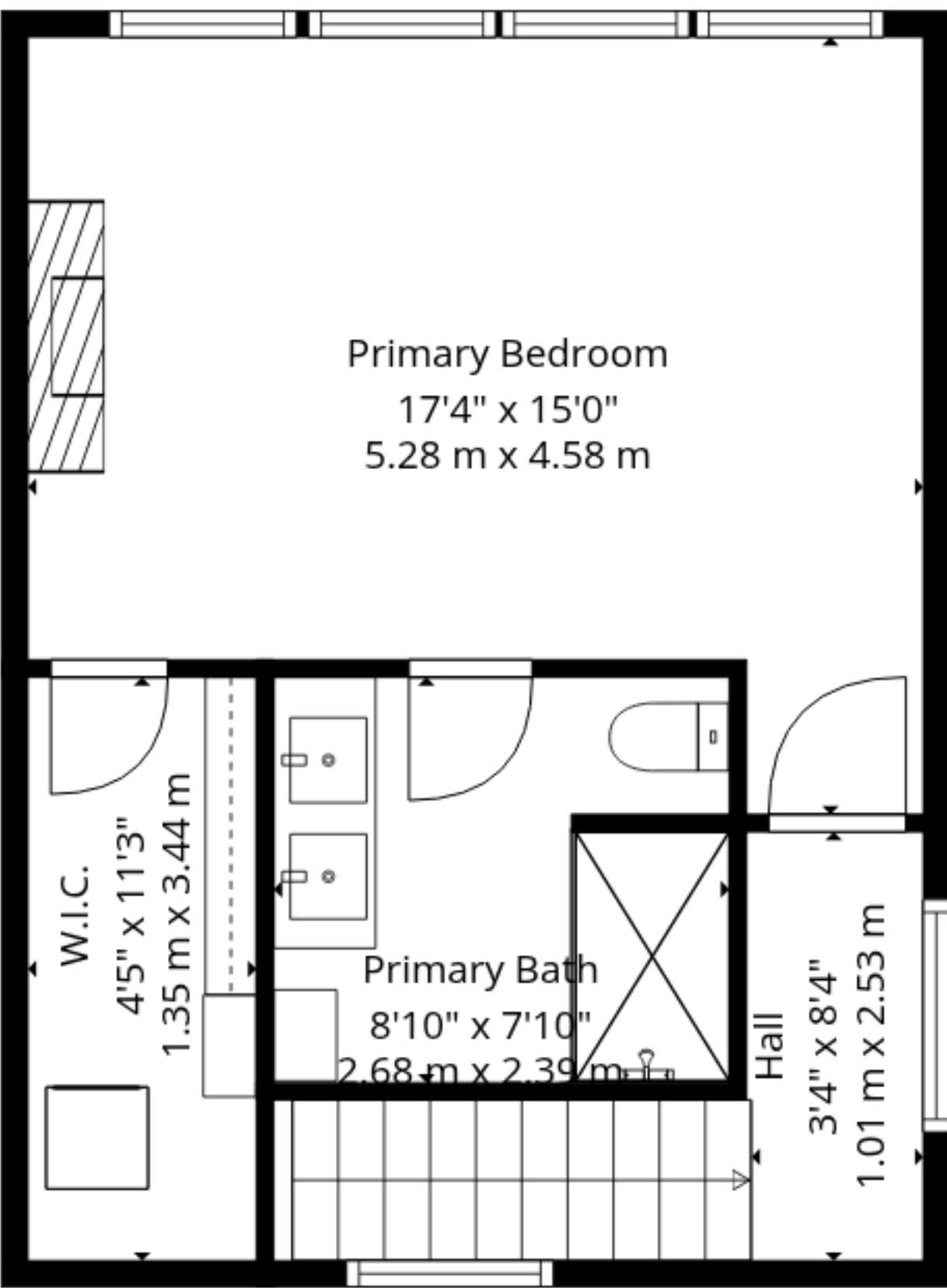




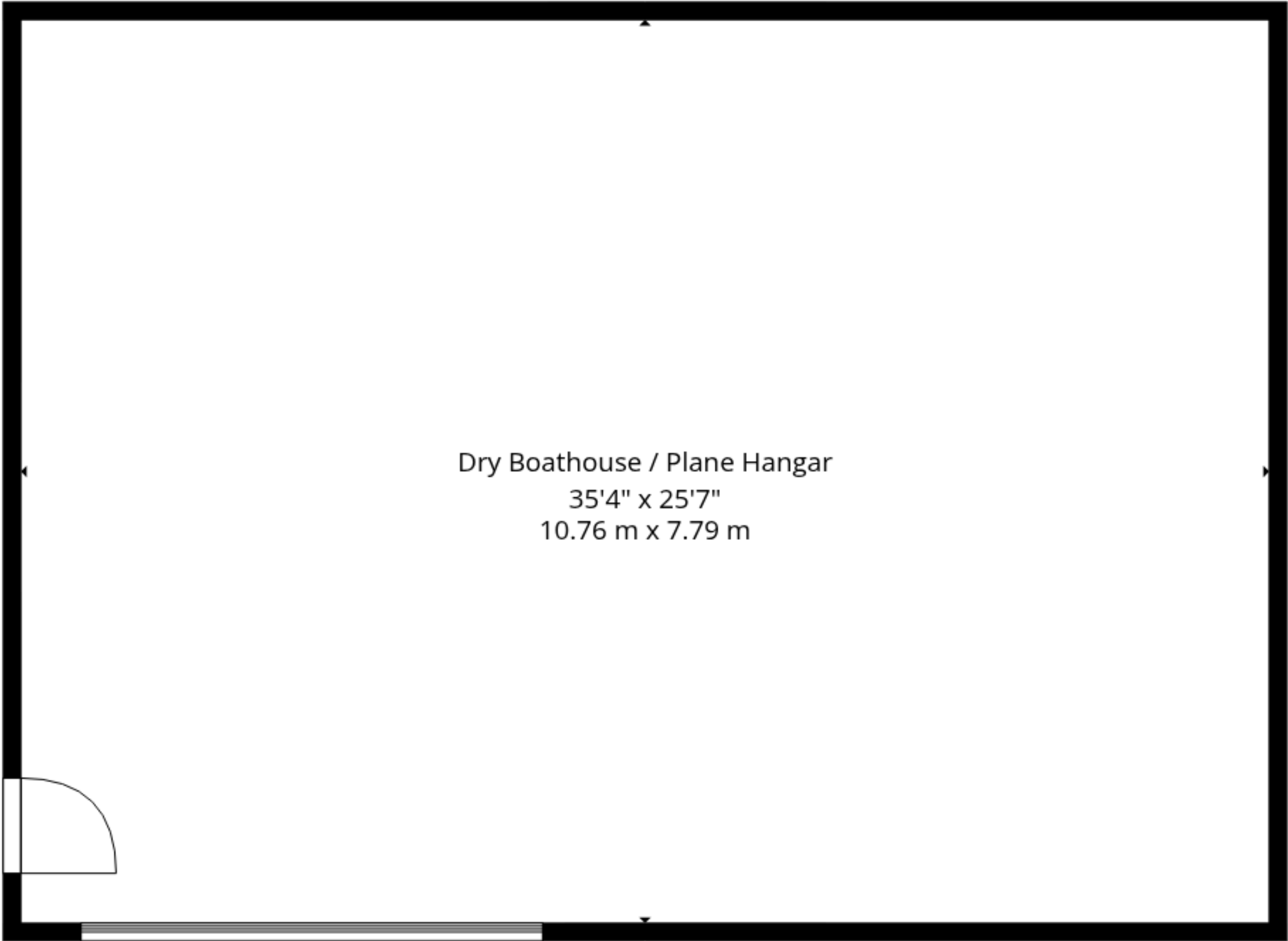
1st Floor



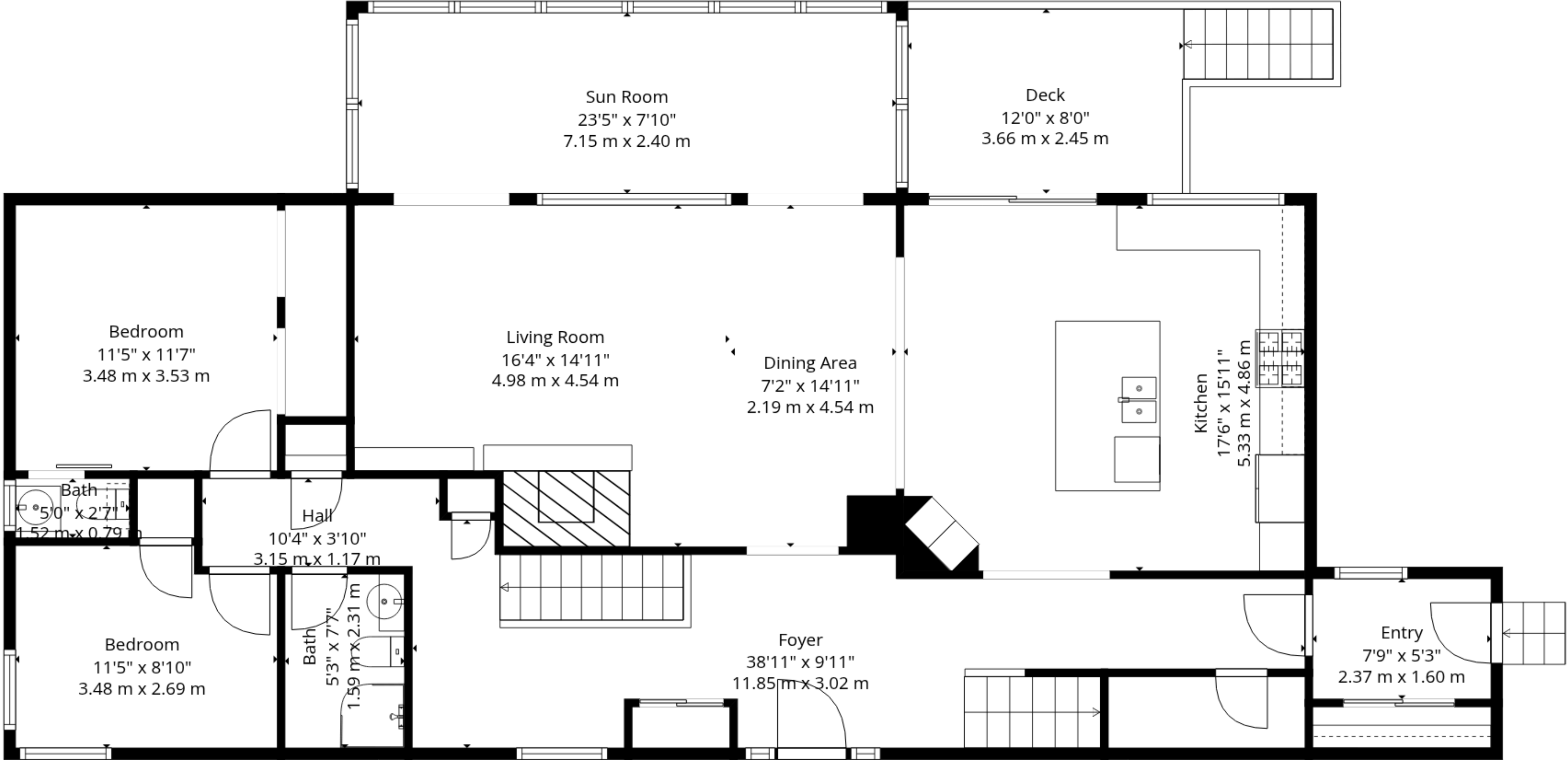
3rd Floor



4th Floor



Basement 1



2nd Floor

**Total GLA: 3342 sq. ft, 310 m2 | Total: 5213 sq. ft, 485 m2**

Floor 1 - Below grade: (Excluded areas 964 sq. ft, 90 m2)

1st floor: 1209 sq. ft, 112 m2 (Excluded areas 201 sq. ft, 19 m2)

2nd floor: 1682 sq. ft, 156 m2 (Excluded areas 116 sq. ft, 11 m2)

3rd floor: 0 sq. ft, 0 m2 (Excluded areas 590 sq. ft, 55 m2)

4th floor: 451 sq. ft, 42 m2

